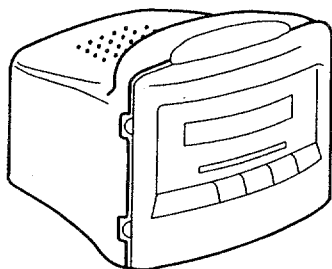


aiwa



FR-AQ75



RADIO RECEIVER

• TYPE: VJ

SPECIFICATIONS

Power source	Household current AC 230 V, 50 Hz
Output	280 mW (EIAJ)/Max: 400 mW
Power consumption	4 W
Speaker	57 mm
Frequency range	FM: 65.0 – 108 MHz AM: 530 – 1,605 kHz
Antennas	FM wire antenna Ferrite bar antenna for AM
Dimensions (W x H x D)	141 x 118 x 122 mm
Weight	Approx. 770 g

- Design and specifications are subject to change without notice.

ELECTRICAL MAIN PARTS LIST

DESCRIPTIONで判断できない物は "REFERENCE NAME LIST" を参照してください。
If can't understand for Description please kindly refer to "REFERENCE NAME LIST".

REF. NO	PART NO.	KANRI NO.	DESCRIPTION	REF. NO	PART NO.	KANRI NO.	DESCRIPTION
IC				T2	S1-001-400-100		IFT,F-810014 10MM
	S0-608-560-280		IC,LM-8560NB/LM-8560N/LM8560	T3	S1-001-700-100		IFT,A-810017 10MM
	S8-474-400-000		IC,TC74HC4060AP	T4	S0-086-400-100		IFT,1A864R,10MM
	S3-108-301-010		IC,TDA-1083/2B/3C/3A	T5	S1-001-500-100		IFT,F-810015 10MM
				VR1	SB-165-033-020		VR,A50K 16MM
TRANSISTOR				CLOCK C.B			
	89-110-155-010		TR,2SA1015-GR	C108	87-010-053-810		CAP,E 1-50V
	89-318-154-080		TR,2SC1815GR	C109	87-010-622-010		CAP,E 470-16V
	S5-901-300-060		TR,9013G	C111	87-010-380-010		CAP,E 47-16V
	S2-901-8G1-000		TR,9018G	C112	87-010-101-080		CAP,E 220-16V
				C118	87-010-037-010		CAP,E 10-50V
DIODE				L101	87-005-686-010		COIL,15UH
	82-596-799-010		DI,1N4001B	L102	S0-300-140-000		COIL,CHOKE 100UH
	82-135-799-010		DIODE,1N4148	LD101	S0-060-550-000		LED,DISPLAY
	87-017-080-080		ZENER,3.9V 1/2W	QUARTZ C.B			
	83-NEG-678-080		ZENER,MTZJ6.2VA1/2W	C901	87-010-045-010		CAP,E 100-25V
RADIO C.B				C909	87-010-101-080		CAP,E 220-16V
C17	87-010-380-010		CAP,E 47-16V	C910	87-010-101-080		CAP,E 220-16V
C20	87-010-248-080		ELECT CAP 220-10V	L901	87-003-147-010		COIL,22UH
C24	87-010-380-010		CAP,E 47-16V	X901	S6-512-000-000		X'TAL,51.2 KHZ
C29	87-010-248-080		ELECT CAP 220-10V	SW C.B			
C30	87-010-380-010		CAP,E 47-16V				
C31	87-010-380-010		CAP,E 47-16V				
C33	87-010-248-080		ELECT CAP 220-10V				
L5	S0-981-651-000		COIL,MW ANT				
L6	S0-446-800-100		IFT,A4468 10MM				
L7	87-005-686-010		COIL,15UH				
L8	S0-118-160-000		COIL,INDUCTANCE CB-250-5-0.35				
PVC1	S3-221-250-110		PVC,AM/FM 160/40PF				
S1	S2-200-511-010		SW,SLIDE 2P2T				
S2	S2-400-711-000		SW,SLIDE 2P4T				
T1	S1-001-300-100		IFT,F-810013 10MM				

TRANSISTOR ILLUSTRATION



E C B

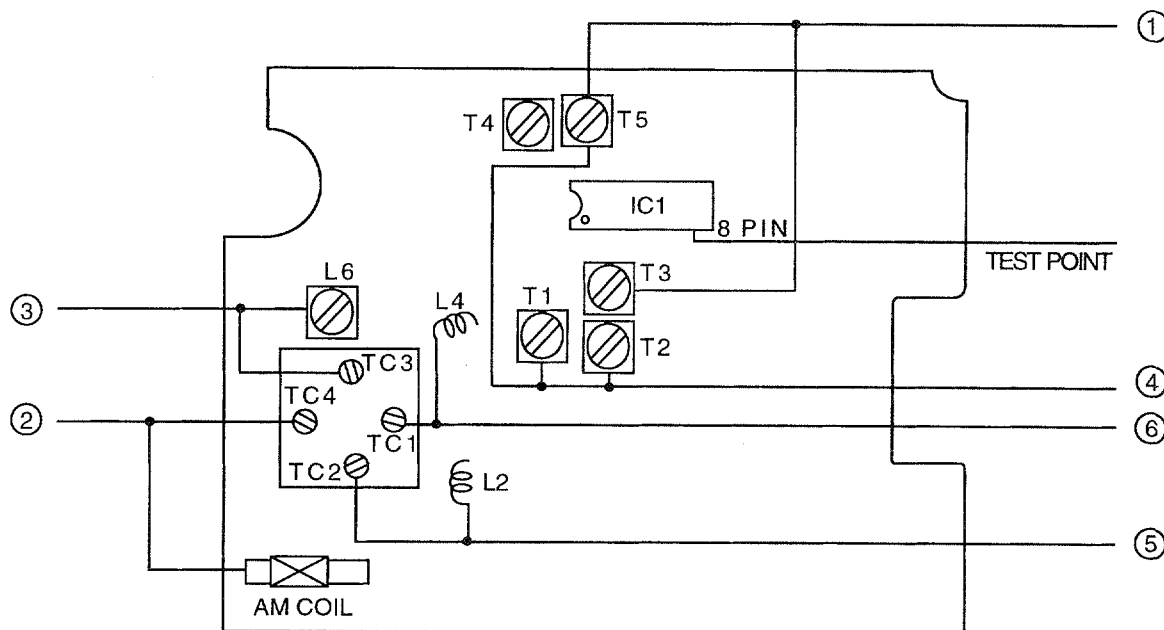
2SA1015
2SC1815



E B C

9013G
9018G

ELECTRICAL ADJUSTMENT



1. AM IF Adjustment

Test point: IC1(TDA1083) 8 PIN

Adjustment location: T3, T4

T3, T4 ----- 455 KHz

2. AM Tracking Adjustment

Test point: IC1(TDA1083) 8 PIN

Adjustment location: AM COIL, TC4

AM COIL ----- 600 KHz

TC4 ----- 1400 KHz

3. AM Frequency Range Adjustment

Test point: IC1(TDA1083) 8 PIN

Adjustment location: L6, TC3

L6 ----- 515 KHz

TC3 ----- 1635 KHz

4. FM IF Adjustment

Test point: IC1(TDA1083) 8 PIN

Adjustment location: T1, T2, T5

T1, T2, T5 ----- 10.7 MHz

5. FM Tracking Adjustment

Test point: IC1(TDA1083) 8 PIN

Adjustment location: L2, TC2

L2 ----- 76 MHz

TC2 ----- 108 MHz

6. FM Frequency Range Adjustment

Test point: IC1(TDA1083) 8 PIN

Adjustment location: L4, TC1

L4 ----- 64 MHz

TC1 ----- 109 MHz

PRACTICAL SERVICE FIGURE

< AM SECTION >

Sensitivity:	Less than 49dB (at 600kHz)
(S/N 10dB)	Less than 46dB (at 1000, 1400kHz)
Signal to Noise ratio:	More than 21dB (at 600kHz) More than 24dB (at 1000, 1400kHz)
Distortion:	Less than 3%
(Input 100dB)	

< FM SECTION >

Sensitivity:	Less than 20dB
(THD 3%)	(at 76, 92, 108MHz)
Distortion:	Less than 2% (at 76MHz)

VOLTAGE CHART

TUNER SECTION

TEST CONDITION: SET AM/FM ON ONE FREQUENCY

IC1(TDA1083)

PIN'S NUMBER	1	2	3	4	5	6	7	8
FM	1.59	1.29	0	6.27	6.28	0	0	1.84
AM	0.99	0.99	0	6.31	6.31	0.92	1.00	1.16
PIN'S NUMBER	9	10	11	12	13	14	15	16
FM	0	1.23	0	2.89	6.29	6.30	6.30	2.04
AM	0	1.24	0	2.91	6.31	6.31	6.31	1.18
	Q1(9018)			Q2(9018)				
	E	C	B	E	C	B		
FM	0.45	5.36	1.11	0.42	5.36	1.11		

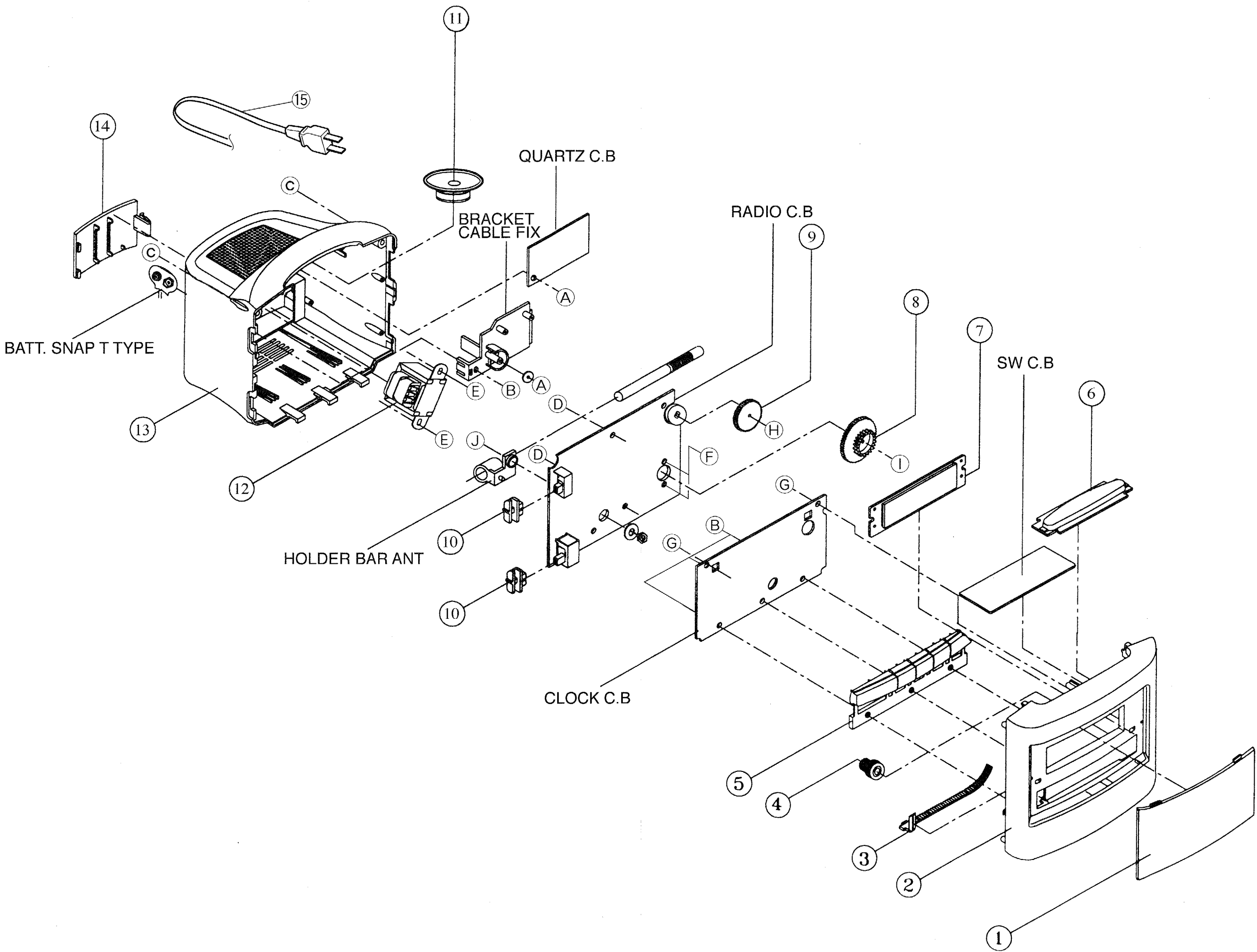
CLOCK SECTION

IC101(LM8560)

PIN'S NUMBER	1	2	3	4	5	6	7	8	9	10	11	12	13	14
	/	/	/	/	/	/	/	/	/	/	/	/	/	/
Switch Function	15	16	17	18	19	20	21	22	23	24	25	26	27	28
Radio On	13.47	0.36	0.33	-0.75	-0.75	-0.79	-0.72	-0.71	-0.68	-0.65	8.73	-0.67	9.65	-0.71
Sleep	17.13	0.76	-1.05	17.53	0.33	0.37	0.35	0.35	0.39	0.39	11.9	0.34	12.71	0.32
Radio	13.47	11.04	0.19	-0.53	-0.62	-0.52	-0.45	-0.51	-0.52	-0.52	8.87	-0.56	9.66	-0.52
Alarm	13.71	12.57	0.14	-0.53	-0.48	-0.52	-0.44	-0.61	-0.67	-0.74	7.91	-0.56	9.10	-0.46
	Q101(9013)													
Switch Function	E	C	B											
Radio On	6.31	12.64	6.98											
Sleep	0.59	17.25	0.89											
Radio	6.17	12.98	6.88											
Alarm	6.19	12.39	6.88											







MECHANICAL PARTS LIST 1/1

DESCRIPTIONで判断できない物は "REFERENCE NAME LIST" を参照してください。
If can't understand for Description please kindly refer to "REFERENCE NAME LIST".

REF. NO	PART NO.	KANRI NO.	DESCRIPTION
1	S7-RU3-101-700		LENS, DIAL (VB)
2	S7-RU3-010-100		CAB, FRONT
3	S7-RU3-090-000		POINTER
4	S7-RU3-040-000		GEAR TUNING
5	S7-RU3-130-100		BTN, SLEEP
6	S7-RU3-030-100		BTN, SNOOZE
7	S0-060-550-000		LED, DISPLAY
8	S7-RU3-050-000		KNOB, TUNING
9	S7-RU3-060-000		KNOB, VOLUME
10	S7-RU3-110-000		KNOB, BAND/ALARM
11	S2-280-005-210		SPKR, 2.25' 8 OHM 0.5W
⚠ 12	S1-87R-U21-400		PT, EI-35/15 230V:9Vx2/10.5V
13	S7-RU3-021-100		CAB, BACK (VB)
14	S7-RU3-080-000		DOOR, BATT
⚠ 15	S2-201-200-010		POWER CORD
A	87-751-095-410		ST3-8
B	87-741-096-010		SCREW, ST3-10MM PAB
C	87-741-097-410		SCREW, ST3-12
D	87-352-096-210		SCREW, ST3-10
E	87-661-097-410		SCREW ST3-12
F	87-741-071-410		SCREW, ST2.6-4
G	87-741-094-410		SCREW, ST3-6
H	87-067-297-010		SCREW, 1.7-4 PM
I	87-255-071-010		SCREW, 2.6-4
J	87-261-095-410		V+3-8

ACCESSORIES/PACKAGE LIST

DESCRIPTIONで判断できない物は "REFERENCE NAME LIST" を参照してください。
If can't understand for Description please kindly refer to "REFERENCE NAME LIST".

REF. NO	PART NO.	KANRI NO.	DESCRIPTION
1	S7-RU7-910-100		INSTRUCTION BOOK (ERPOHCZ)

REFERENCE NAME LIST

ELECTRICAL SECTION

DESCRIPTION	REFERENCE NAME
ANT	ANTENNAS
C-	CHIP
C-CAP	CAP, CHIP
C-CAP TN	CAP, CHIP TANTALUM
C-COIL	COIL, CHIP
C-DI	DIODE, CHIP
C-DIODE	DIODE, CHIP
C-FET	FET, CHIP
C-FOTR	FILTER, CHIP
C-JACK	JACK, CHIP
C-LED	LED, CHIP
C-RES	RES, CHIP
C-SFR	SFR, CHIP
C-SLIDE SW	SLIDE SWITCH, CHIP
C-SW	SWITCH, CHIP
C-TR	TRANSISTOR, CHIP
C-VR	VOLUME, CHIP
C-ZENER	ZENER, CHIP
CAP, CER	CAP, CERA-SOL
CAP, E	CAP, ELECT
CAP, M/F	CAP, FILM
CAP, TC	CAP, CERA-SOL
CAP, TC-U	CAP, CERA-SOL SS
CAP, TN	CAP, TANTALUM
CERA FIL	FILTER, CERAMIC
CF	FILTER, CERAMIC
DL	DELAY LINE
E/CAP	CAP, ELECT
FILT	FILTER
FLTR	FILTER
FUSE RES	RES, FUSE
MOT	MOTOR
P-DIODE	PHOTO DIODE
P-SNSR	PHOTO SENSER
P-TR	PHOTO TRANSISTOR
POLY VARI	VARIABLE CAPACITOR
PPCAP	CAP, PP
PT	POWER TRANSFORMER
PTR, RES	PTR, MELF
RC	REMOTE CONTROLLER
RES NF	RES, NON-FLAMMABLE
RESO	RESONATOR
SHLD	SHIELD
SOL	SOLENOID
SPKR	SPEAKER
SW, LVR	SWITCH, LEVER
SW, RTRY	SWITCH, ROTARY
SW, SL	SWITCH, SLIDE
TC CAP	CAP, CERA-SOL
THMS	THERMISTOR
TR	TRANSISTOR
TRIMMER	CAP, TRIMMER
TUN-CAP	VARIABLE CAPACITOR
VIB, CER	RESONATOR, CERAMIC
VIB, XTAL	RESONATOR, CRYSTAL
VR	VOLUME
ZENER	DIODE, ZENER

MECHANICAL SECTION

DESCRIPTION	REFERENCE NAME
ADHESHIVE	SHEET ADHESHIVE
AZ	AZIMUTH
BAR-ANT	BAR-ANTENNA
BAT	BATTERY
BATT	BATTERY
BRG	BEARING
BTN	BUTTON
CAB	CABINET
CASS	CASSETTE
CHAS	CHASSIS
CLR	COLLAR
CONT	CONTROL
CRSR	CURSOR
CU	CUSHION
CUSH	CUSHION
DIR	DIRECTION
DUBB	DUBBING
FL	FRONT LOADING
FLY-WHL	FLYWHEEL
FR	FRONT
FUN	FUNCTION
G-CU	G-CUSHION
HDL	HANDOL
HIMERON	CLOTH
HINGE, BAT	HINGE, BATTERY
HLDR	HOLDER
HT-SINK	HEAT SINK
IB	INSTRUCTION BOOKLET
IDLE	IDLER
IND, L-R	INDICATOR, L-R
KEY, CONT	KEY, CONTROL
KEY, PRGM	KEY, PROGRAM
KNOB, SL	KNOB, SLIDE
LBL	LABEL
LID, BATT	LID, BATTERY
LID, CASS	LID, CASSETTE
LVR	LEVER
P-SP	P-SPRING
PANEL, CONT	PANEL, CONTROL
PANEL, FR	PANEL, FRONT
PRGM	PROGRAM
PULLY, LOAD MO	PULLY, LOAD MOTOR
RBN	RIBBON
S-	SPECIAL
SEG	SEGMENT
SH	SHEET
SHLD-SH	SHIELD-SHEET
SL	SLIDE
SP	SPRING
SP-SCREW	SPECIAL-SCREW
SPACER, BAT	SPACER, BATTERY
SPR	SPRING
SPR-P	P-SPRING
SPR-PC-PUSH	P-SPRING, C-PUSH
T-SP	T-SPRING
TERM	TERMINAL
TRIG	TRIGGER
TUN	TUNING
VOL	VOLUME
W	WASHER
WHL	WHEEL
WORM-WHL	WORM-WHEEL

サービス技術ニュース	
番号	連絡内容
G- -	
G- -	
G- -	

アイワ株式会社
AIWA CO.,LTD.

931261

Tokyo Japan